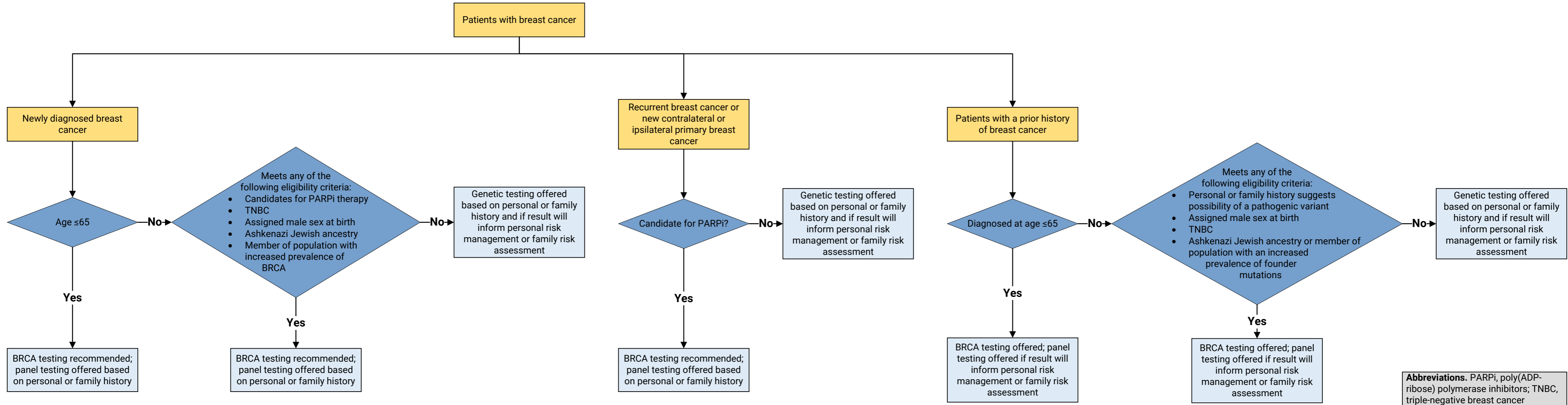


Germline Testing in Patients with Breast Cancer Algorithm



Abbreviations. PARPi, poly(ADP-ribose) polymerase inhibitors; TNBC, triple-negative breast cancer

This algorithm is derived from recommendations in *Germline Testing in Patients With Breast Cancer: ASCO-SSO Guideline*. This is a tool based on an ASCO Guideline and is not intended to substitute for the independent professional judgment of the treating physician. Practice guidelines do not account for individual variation among patients. This tool does not purport to suggest any particular course of medical treatment. Use of the guideline and this tool are voluntary.