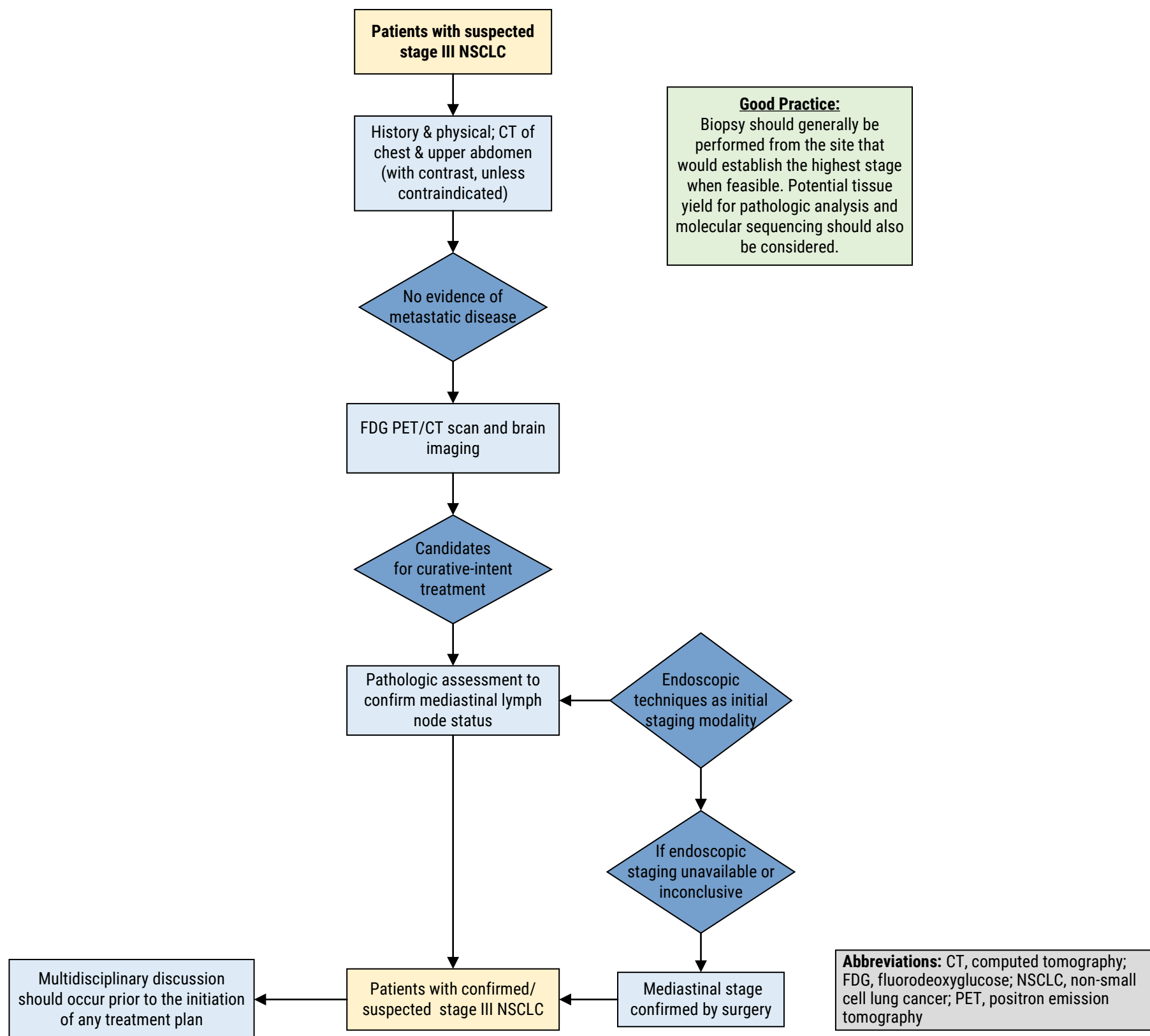
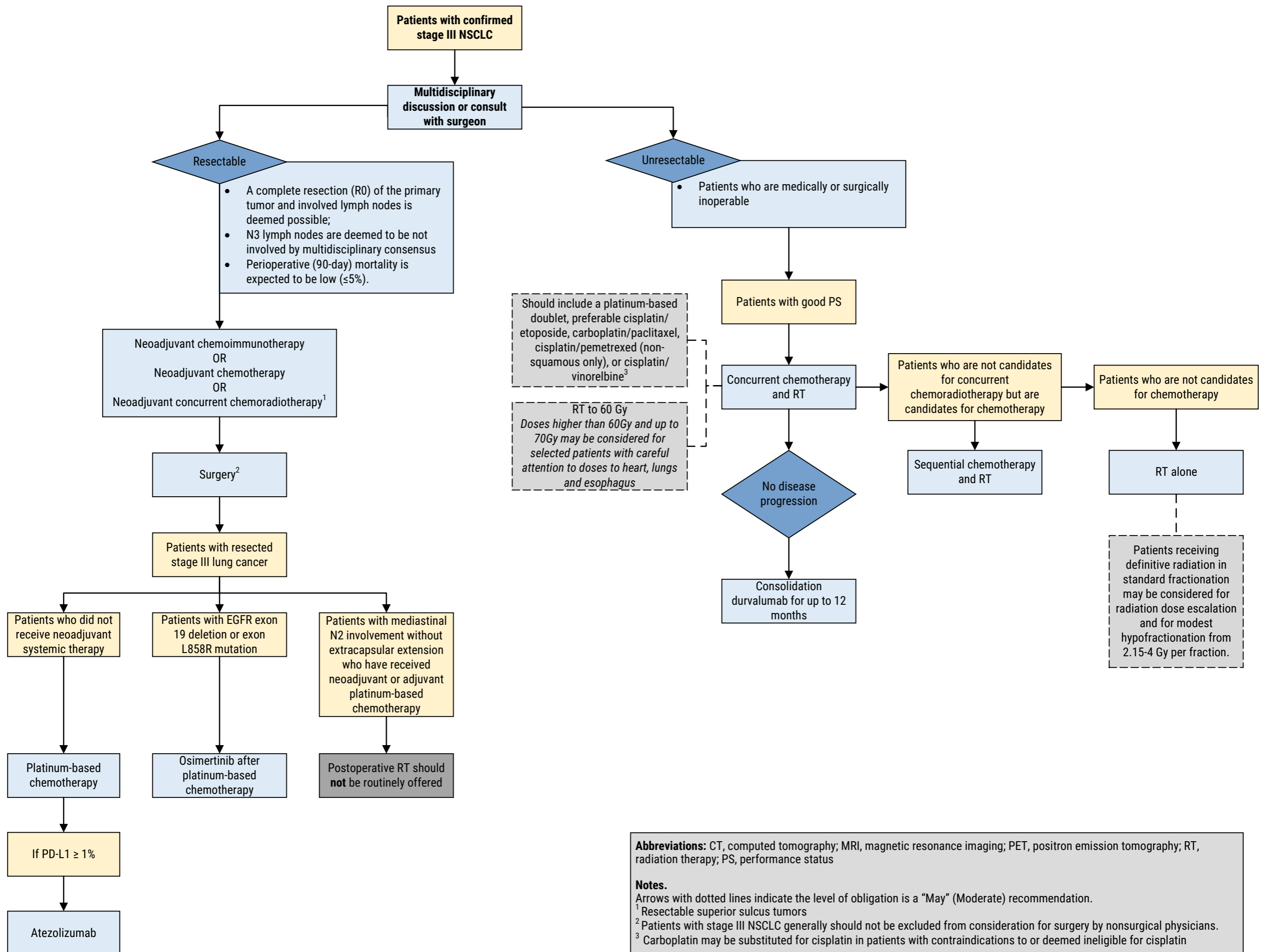


## Evaluation and Staging of Stage III NSCLC Algorithm



This algorithm is derived from recommendations in *Management of Stage III Non–Small-Cell Lung Cancer: ASCO Guideline* and *Management of Stage III NSCLC: ASCO Guideline Rapid Recommendation Update*. This is a tool based on an ASCO Guideline and is not intended to substitute for the independent professional judgment of the treating physician. Practice guidelines do not account for individual variation among patients. This tool does not purport to suggest any particular course of medical treatment. Use of the guideline and this tool are voluntary.

## Management of Stage III NSCLC Algorithm



**Abbreviations:** CT, computed tomography; MRI, magnetic resonance imaging; PET, positron emission tomography; RT, radiation therapy; PS, performance status

**Notes.**  
 Arrows with dotted lines indicate the level of obligation is a “May” (Moderate) recommendation.  
<sup>1</sup> Resectable superior sulcus tumors  
<sup>2</sup> Patients with stage III NSCLC generally should not be excluded from consideration for surgery by nonsurgical physicians.  
<sup>3</sup> Carboplatin may be substituted for cisplatin in patients with contraindications to or deemed ineligible for cisplatin

This algorithm is derived from recommendations in *Management of Stage III Non–Small-Cell Lung Cancer: ASCO Guideline* and *Management of Stage III NSCLC: ASCO Guideline Rapid Recommendation Update*. This is a tool based on an ASCO Guideline and is not intended to substitute for the independent professional judgment of the treating physician. Practice guidelines do not account for individual variation among patients. This tool does not purport to suggest any particular course of medical treatment. Use of the guideline and this tool are voluntary.